

## SWITCHING from HERE to THERE: the SWITCH Approach as a Transition Framework

Alison Duffy  
Professor Chris Jefferies  
Urban Water Technology Centre, University of Abertay

## SWITCHING / Transitioning Content

- ☐ How did we get here
- ☐ Where are we going?
- ☐ How are we going to get there?
- ☐ The SWITCH Approach as a Transition Framework
- ☐ Accra Case Study
- ☐ IUWM Test!!

## How did we get here?

Recognition of the fact that the way water systems are managed is expensive, inefficient and unsustainable



  
**SWITCH**

  
UNIVERSITY  
ABERTAY DUNDEE

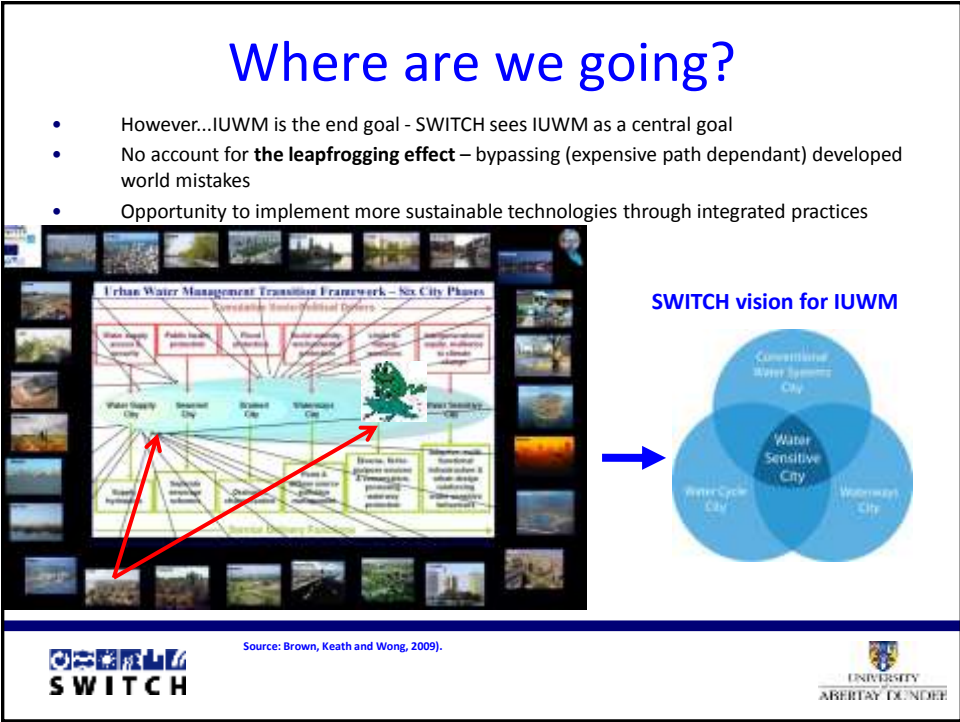
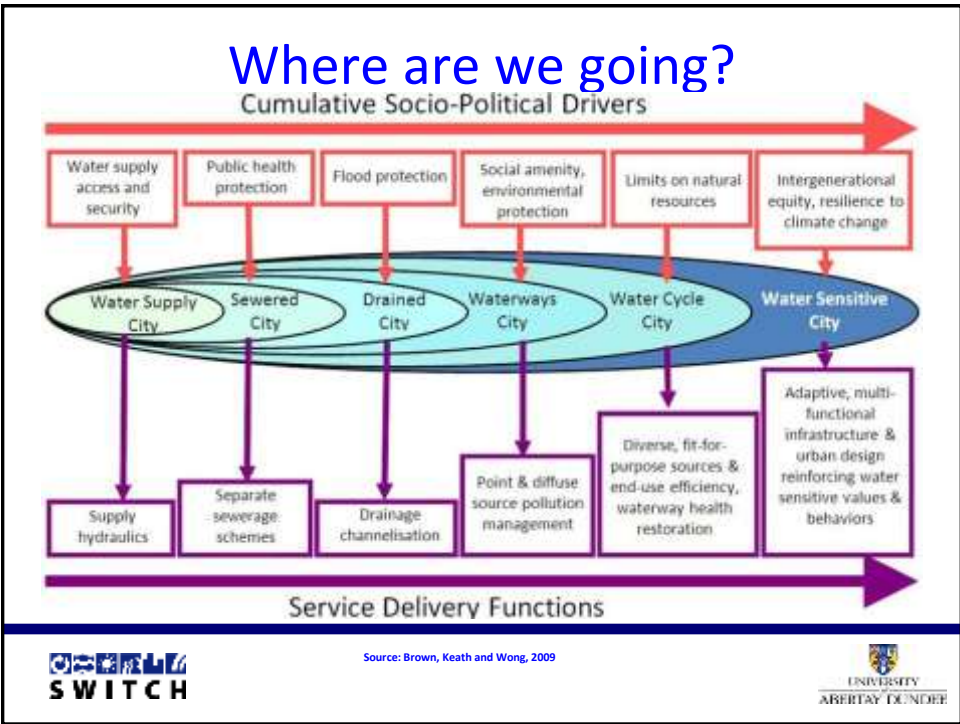
## Where are we going?

Realisation that there are newer and better ways to address water supply and sanitation problems or to drain a city in more holistic and integrated ways



  
**SWITCH**

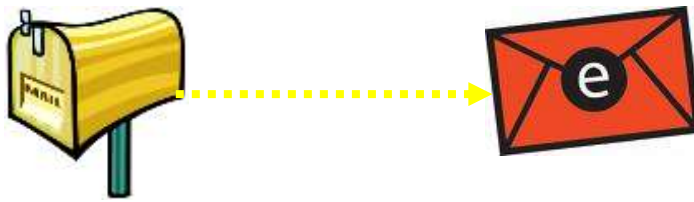
  
UNIVERSITY  
ABERTAY DUNDEE



## How are we going to get there?

**Transition** - a '*radical*' switch from one type of socio-technical system to another...

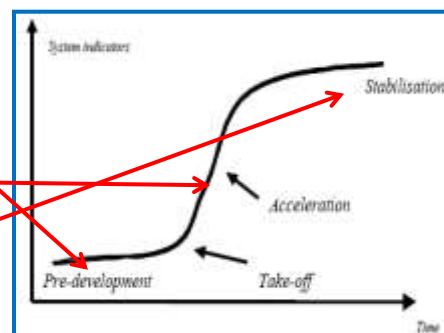
**Transitioning** – a new approach for influencing change towards more sustainable futures



## How are we going to get there?

### Transition Phases

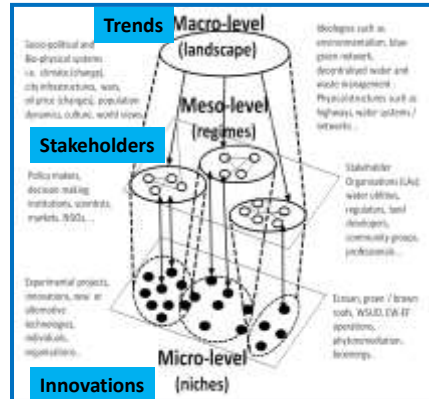
- Begins with a transformation away from the old system or processes...
- Through a period of quick and unstable development..
- Reverting to relative stability again with new methods or processes becoming dominant or 'business as usual'



# How are we going to get there?

## Multi-level perspective

- *A transition is usually a long term process (30-50 years) and happens due to co-evolution of institutional, cultural, economical, ecological and technological processes at various levels'.*
- Transition is the interaction between different functional scale levels .
- Recognizes that the macro level is the broad cultural, political, natural environment, infrastructural view of a city which plays a significant role in slowing down or accelerating a transition.
- ...either through for example, inertia at the political level or uptake at the cultural level of new philosophies.



MLP approach. Based on Geels & Kemp, 2000

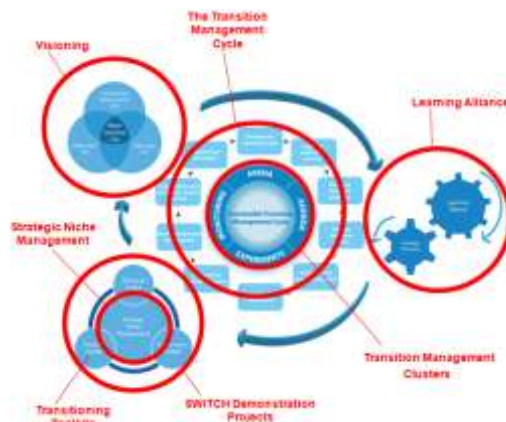


ISSUES Seminar 6 Weighing up the benefits. Dundee 9.3.10



# How are we going to get there?

## The SWITCH Approach as a Transition Framework



# The SWITCH Approach as a Transition Framework

## The SWITCH Approach



Establish a Learning Alliance

Develop a Strategic Plan

Execute Demonstration Projects

Monitor, Evaluate and Learn

## Transition Management Clusters



Establish the Transition Arena

Develop a Transition Agenda

Execute Transition Experiments

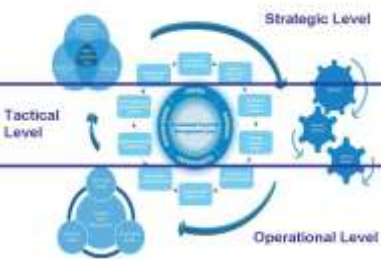
Evaluate, Monitor and Learn



# The SWITCH Approach as a Transition Framework

## Transition management levels

- not a hierarchy
- influence and operate in the same timescale as each other
- distinction is type of activity and timescale
- different types of actors participate at each level.
- diverse set of competencies and skills are required across all levels.



	Problem Level	Time Scale	Systems Level
Strategic	Abstract / societal system	Long-term (30yr)	System
Tactical	Institutions / regime	Mid-term (5-15yr)	Sub-system
Operational	project	Short-term (0-5yr)	Niche / mini-system





## The SWITCH Approach as a Transition Framework

The framework is the result of analysing the SWITCH approach and consolidating it with the sustainable transition management cycle (clusters and steps) and strategic niche management processes which are the result of many years research within the transition community.



**SWITCH**



FF

## The SWITCH Approach as a Transition Framework



The Learning Alliance operate within all levels of the transition management cycle – they lay the foundations for a transitioning journey

- Developing visioning processes
- Strategic discussions (cultural norms / functional requirements etc)
- Long-term goal formulation, co-developing strategic plans (transition agenda), capacity building processes
- Creating room for innovations to 'grow' (transition experiments)
- Monitoring and evaluation processes for lesson learning – closing the loop and the transitioning process continues...

**SWITCH**

UNIVERSITY  
OF  
ABERTAY DUNDEE

## The SWITCH Approach as a Transition Framework

- Strategic Niche Management (SNM) is an important if not vital part of the process as they provide the scope and pathways for a transition to occur. Many types of socio-technical transitions are as a result of niche development.

- SNM is the creation of technological niches where stakeholders provide a protected space for technological experiments that are aligned with future visions in order for them to develop and mature – with the result that the innovation may become embedded into the existing regime.



- The transitioning tool kits are the outputs of the SWITCH Demo projects (technological niches) which focus on 3 key knowledge areas



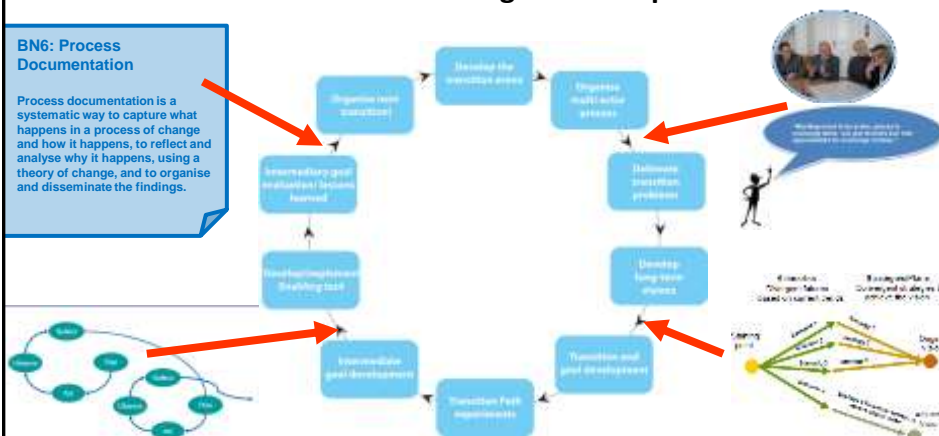
EF

## The SWITCH Approach as a Transition Framework

### Transition Management Steps

#### BN6: Process Documentation

Process documentation is a systematic way to capture what happens in a process of change and how it happens, to reflect and analyse why it happens, using a theory of change, and to organise and disseminate the findings.





# Accra Case Study

## Accra Issues

- **Rapid growth, especially in the city fringes**
- **Development of slum areas**
- **Poor access to water supply and sanitation by the urban poor**
- **High distribution network losses**
- **Polluted water resources**
- **Low water supply services cost recovery**

## Accra Vision

- 100% access to uninterrupted water supply
- 10-15% physical losses and 10% commercial losses
- Efficient use of water by consumers
- Quality of surface water to meet Ghanaian standards
- Improved productive uses of water for livelihood
- 50-80% of waste recycled
- Accra to be a clean city with drainage canals and streets free of garbage
- 80% of citizens to follow good sanitation practices
- Integrated and sustainable waste management system
- 70 % reduction in the incidence of diseases associated with water and sanitation
- 100% of sanitation facilities at an acceptable level (healthy, clean, dignified, safe)



## Accra Urban Water Service Delivery

Landscape: Trends (world Views, socio-political, climate change) / Physical water systems

Regime: Stakeholders / Decision makers / scientists

Water service Delivery

