

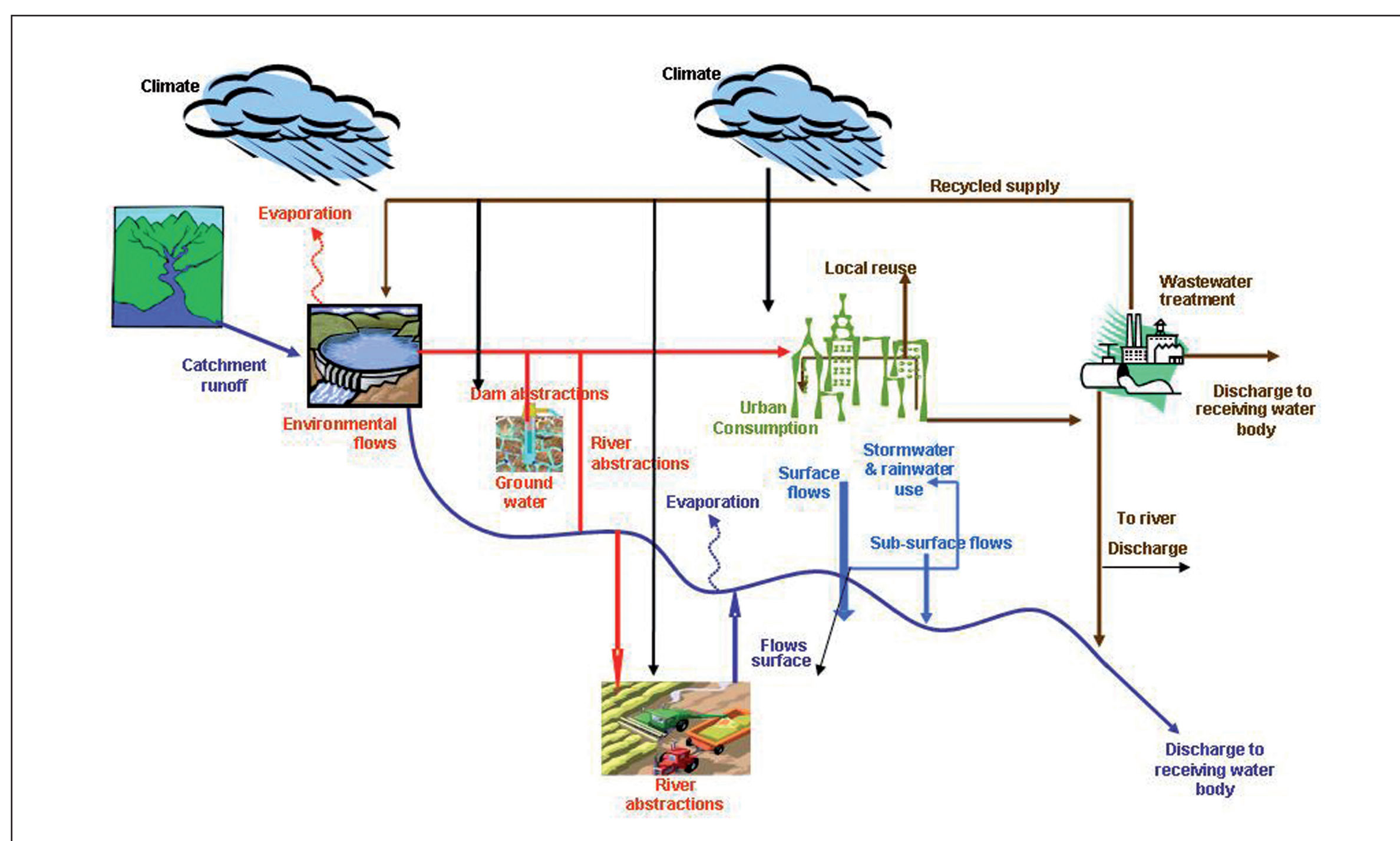
HAMBURG: DEMONSTRATION PROJECTS WATER SENSITIVE URBAN DESIGN



DESCRIPTION DEMONSTRATION PROJECTS

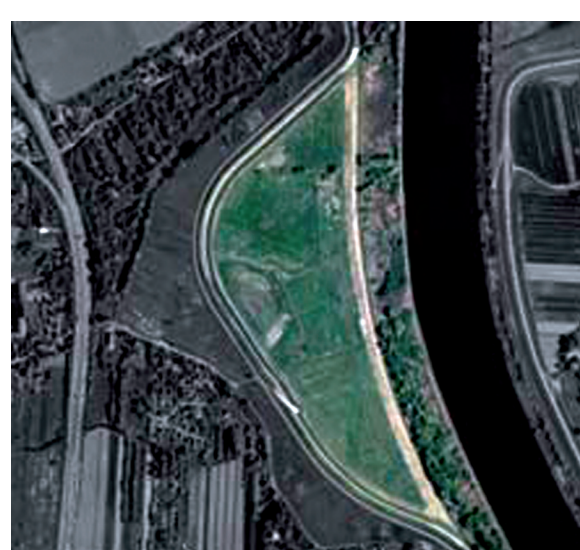
WATER CYCLE

- IUWM plan addresses all parts of the urban water cycle. Smallscale demonstration projects are focused on single parts of the water cycle like stormwater or surface waters.



INTEGRATED URBAN WATER MANAGEMENT PLAN WILHELMSBURG

- Developed together with the LA.
- Includes strategies for water management, urban planning and landscape design Wilhelmsburg 2030.
- Facilitates implementation water management innovations.



KREETSAND

- Projekt together with Hamburg Port Authority – pilot scheme enlargement tidal volume Elbe River.
- Information and documentation centre to facilitate paradigm shift.



HAULANDER WEG

- Project together with International Building Exhibition.
- WSUD-solutions for stormwater management and water pollution control
- Introduce WSUD in urban planning process.



POTENTIAL IMPACT

- Synergies of integrated water management.
- Contribution of structural WSUD measures to improve the communication of water management innovations.

RESULTS TO DATE

- Vision, indicators and scenarios IUWM plan.
- WSUD concept stormwater management, 'Haulander Weg'.

EVIDENCE OF DEMAND

- All demonstration projects are linked to the vision, 'Make water visible and useful' of the IUWM plan.

PARTNERS

- HafenCity University
- Municipality of Hamburg
- Hamburg Port Authority
- International Building Exhibition
- Members Learning Alliance

