




The SWITCH Scientific Conference  
Sustainable Water Management Improves Tomorrow's Cities' Health:  
achievements and way forward  
16-18 November 2011, Lake Palace, Mumbai

# SESSION 2

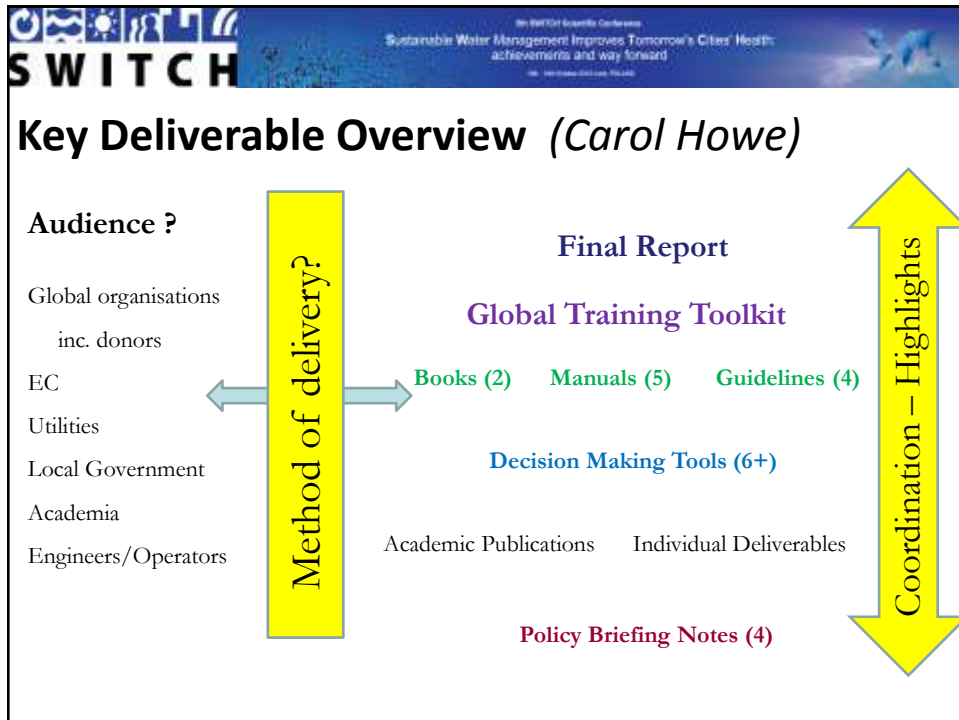
## **SWITCH:** Key products of the project



The SWITCH Scientific Conference  
Sustainable Water Management Improves Tomorrow's Cities' Health:  
achievements and way forward  
16-18 November 2011, Lake Palace, Mumbai

# Overview of key outputs

*Carol Howe*



**SWITCH** Sustainable Water Management Improves Tomorrow's Cities' Health: achievements and way forward

## Speakers in Session 2 to address:

- Basics of what each product includes?
- Key audience?
- Dissemination method?
- What existing gap does it fill?
- Case studies included
- Links to CityWater, Strategic Planning, other key deliverables

## Initial Observations

Overall Gaps (to be discussed)

- Health impacts
- Risk assessments
- Climate impact and adaptation
- Economics and financials

Case Studies

Overall listing and template for dissemination?

Lack of integration/coordination – *seeing the forest for the trees*

Continual criticism from EC