

SWITCHED ON!

Newsletter 6 – June 2009

NEWS FROM SWITCH

1. SWITCH plans for 2009 / 2010
 2. Announcing the SWITCH 4th Scientific Meeting, Delft, 4-7 October 2009
 3. Announcing the Global CityWater Futures Summit, Delft, 7-10 October 2009
 4. SWITCH at Istanbul 5th World Water Forum
 5. Connecting Delta Cities
 6. SWITCH at the 34th WEDC International Conference (Ethiopia – 18-22 May 2009)
 7. City Water Birmingham Meeting
 8. More case studies to explore triggers and barriers for scaling up sustainable urban water management
 9. Overall structure of SWITCH Training Kit now consolidated
 10. Spotlight on SWITCH Cities: Blue-Green Network in Lodz
-

1. SWITCH plans for 2009 / 2010

SWITCH is in Year 4 of its 5 year programme. Research and Demonstration activities are on-going in 12 SWITCH cities with results being delivered daily. For 2009 and the first half of 2010, SWITCH's focus will be on:

- Bringing together cities to discuss and exchange ideas as well as test SWITCH products – starting with the Global CityWater Futures Summit in October
- Developing discussion papers and briefing notes
- A SWITCH Science Summit in Paris in the spring of 2010
- Preparing deliverables and making the key deliverables of SWITCH easily accessible to both the scientific and practitioner audiences
- Development of the Global Training Package
- Piloting of the CityWater decision-making tool
- Progression of strategic plans in the SWITCH cities
- Completion of the SWITCH demonstrations
- Embedding SWITCH learnings into existing programmes

Read on for more information on these plans and recent SWITCH activities!

2. Announcing the SWITCH 4th Scientific Meeting, Delft, 4-7 October 2009

SWITCH researchers from around the world will

gather in Delft, the Netherlands, from October 4 to 7 to share findings about their research. Progress in the cities towards strategic integrated urban water management plans and results from 14 demonstrations will also be discussed along with decision-making tools like CityWater and integration activities like energy/water connections.

With one year to go in SWITCH a focus of the meeting will be on the final products of SWITCH, including the Global Training Package and the SWITCH Report Series. The meeting will immediately precede the Global CityWater Futures Summit to enable SWITCH and other researchers to interact with practitioners from urban areas around the world.

3. Announcing the Global CityWater Futures Summit, Delft, 7-10 October 2009

The Summit will bring together over 50 experts from around the world with 100 practitioners from cities in Africa, Europe, South America, Asia, the Middle East, and Australia as well as donor groups and international organisations to join forces in accelerating change towards a more sustainable water City of the Future.

Over a three day period participants will be inspired by speakers who have changed the way things are done. They will interact, exchange ideas and share experiences. The Summit will culminate in a series of briefing notes, globally authored by the participants,

to influence policy by highlighting successes and targeting key impediments to progress towards sustainable urban water management.

The Summit will have Five Focus Areas:

- Inclusion of urban water management into city strategic planning – adoption of sustainability indicators, resilience to climate change
- Use of decision-making tools that integrate water, sanitation, drainage, energy, urban planning and agriculture and economics
- Methods for local players to work together to create these cross-disciplinary and organisational plans as well as drive the right science agenda
- Transitioning existing institutional, economic, technological and social systems – roadmap of how to get started
- Mainstreaming demonstrations into common practice. Sharing experiences and overcoming bureaucratic hurdles.

For more information about the Summit, visit:

http://www.switchurbanwater.eu/news_fevents.php

4. SWITCH at Istanbul 5th World Water Forum

SWITCH participated in the 5th World Water Forum, 15-22 March 2009, in particular under topic 6.2: *Water Science and Technology: Appropriate and Innovative Solutions for the 21st Century to Address the Needs of Society*. Kala Vairavamoorthy (Scientific Director) provided an overview of the topic, and other SWITCH members from IRC, University of Abertay, UNESCO-IHE, and the Learning Alliances from Accra, Alexandria and Lodz were involved as convenors, speakers and panelists in the various sessions.

Session 6.2.2 on *Collaborative and problem-solving research in the WASH sector: Achieving greater use and impact of research through the learning alliance and other multi-stakeholder approaches* included a series of short skits by SWITCH members (see photo) which showed the transition of a typical learning alliance over time. The following recommendations were made from the session:

- To ensure that research is demand-driven, we need to connect research needs and potential research providers, either through a “marketplace” or through a more formal multi-stakeholder process (e.g. learning alliance).
- Planning processes should have funded facilitators with expertise to ensure a multi-stakeholder and multi-disciplinary process (to act as resource persons too).
- Linking stakeholder platforms at city level and also community level (since this is usually

missing) should be established if following the learning alliance approach.



Skit team at Istanbul 5th World Water Forum

Similarly, Chris Jefferies was involved in session 6.2.3 on *Integrated Urban Water Management – can we get there in failed cities in the future?* where the following recommendations were made:

- that the most water resilient city is a technology-neutral city which is one where decisions are not constrained by the existing infrastructure but are made through a more holistic approach. Cities should strive to be technology-neutral whilst also being less polluting, energy consuming and costly.
- that steps should be made to move towards an integrated approach to urban water management.
- as water management is currently supply driven, this needs to change to being more balanced with demand, the latter with strong consideration towards water resource augmentation, reduction, reuse and recycle.

5. Connecting Delta Cities

SWITCH secured additional funding to be part of the documentary *Connecting Delta Cities*, which was launched at the 5th World Water Forum. The film explores the impacts of climate change on coastal cities like Jakarta, Rotterdam, New York and Alexandria.

In *Connecting Delta Cities*, scientists and policy makers of each city share their view on current problems and explain future plans. The film shows that all coastal cities face similar problems – problems that can be tackled more efficiently through an exchange of knowledge and intensive cooperation. The segment on Alexandria illustrates the complexity of urban water management issues and how this is compounded by issues like climate change.

See the full version of the film (42 mins) at http://www.thewaterchannel.tv/index.php?option=com_hwdvideoshare&task=viewvideo&Itemid=53&video_id=180

6. SWITCH at the 34th WEDC International Conference (Ethiopia – 18-22 May 2009)

The 34th WEDC International Conference on Water, Sanitation and Hygiene: Sustainable Development and Multisectoral Approaches included SWITCH participation as follows:

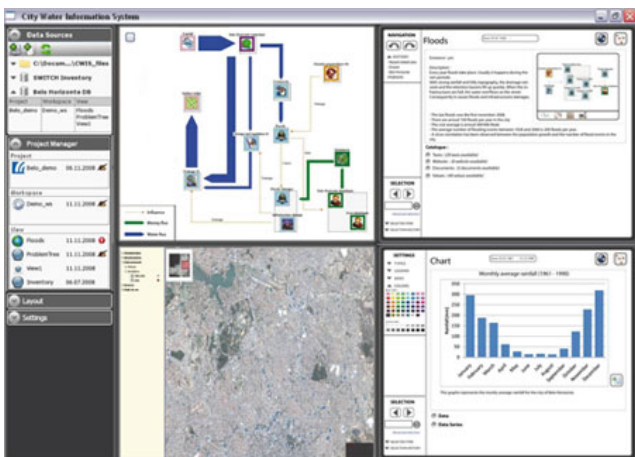
- There was a display of 12 SWITCH Demonstration City posters
- A paper was presented by Sam Kayaga within the *Demand Management* thematic session (Work Package 3.1)
- A discussion on ‘Learning Alliances’ which included presentations drawn from the experience of projects such as RiPPLE, SWITCH, MUS and WASHCost.



Poster display at 34th WEDC International Conference

7. City Water Birmingham Meeting

In May, the team developing the City Water (CW) decision support system arrived in Birmingham to hold a series of presentations on the functionality of the software so far, progress made from previous meetings and to develop strategies to finalise the model. CW Balance and CW Economics are progressing well, as is the overarching CW Information System. The remaining elements (CW Drain, CW Futures and CW Risk) are developing, and it is hoped that development and testing will be completed by the end of the year.



Screen shot from CWIS

Following on from this, the Birmingham Learning Alliance were given a preview of the CW Decision Support System. This encompassed presentations designed to showcase the software capabilities and the CW team gained feedback from the LA on what data they can provide to the researchers involved and what the LA would like to see included in the model. Representatives were present from the Environment Agency, Birmingham City Council and Severn Trent Water Limited. These agencies are working with us to ensure that the data in City Water is accurate and relevant.

Copies of the presentations are available from <http://switchbirmingham.wordpress.com/2009/06/03/city-water-presentations/>

8. More case studies to explore triggers and barriers for scaling up sustainable urban water management

In order to better understand how the transformation from conventional to integrated approaches in urban water management can be achieved, ICLEI will develop case studies on best practices in implementing innovations in relevant technologies, systems and processes. Key partners for this task – conducted under SWITCH Work Package 6.1 – are the Greenwich University Enterprises Ltd. (GUEL) and the Federal University of Minas Gerais (UFMG). Other partners, especially subject group leaders, will become involved as appropriate to guide the activity and potentially also to review drafts of case studies.

The results and conclusions will contribute, amongst others, to the Transition Manual that is produced under the lead of the University of Abertay.

While the criteria for selecting the cities are still under development, ICLEI welcomes hints and suggestions on (non-SWITCH) cases that provide good examples on the triggers and barriers for up-scaling the type of innovation that is promoted by SWITCH.

Contact: Barbara Anton (barbara.anton@iclei.org) and Ralph Philip (ralph.philip@iclei.org), www.iclei.org/itc/switch.

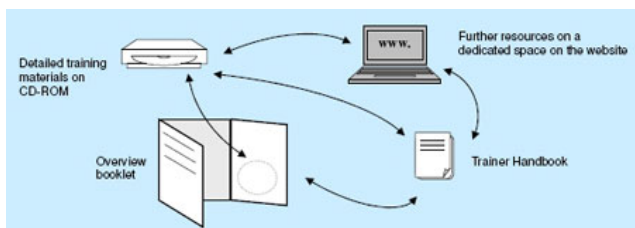
9. Overall structure of SWITCH Training Kit now consolidated

The development of the SWITCH Training Kit is now in full gear following the final definition of the overall structure of the five modules that will be developed over the next 12 months. The modules will be:

1. Creating the future
(On IUWM more generally as well as on the steps of a strategic planning process)
2. Involving all the players
(On Learning Alliances and other multi-stakeholder approaches)
3. Exploring the options
(Containing five sub-modules on natural systems for water and waste water treatment, Sustainable Urban Drainage Systems (SUDS), decentralised waste water management, demand management, and Water-Sensitive Urban Design (WSUD))
4. Choosing a sustainable path
(On City Water, a decision-making tool for urban water management)
5. Transitioning systems
(On enabling and disabling factors for working towards sustainability in water technologies, systems and processes)

Experts in urban water management – especially practitioners from local governments and water utilities – are invited to accompany the development of the SWITCH Training Kit and thus receive regular updates on the finalisation of the different modules and the related pilot training workshops. Any advice on how to improve and complete the materials will also be highly appreciated.

See <http://www.switchtraining.eu/index.php?id=7198> for a brochure on the SWITCH Training Kit.



Also contact Barbara Anton (barbara.anton@iclei.org) or Ralph Philip (ralph.philip@iclei.org), if you are interested in being kept up to date on the SWITCH Training Kit development!

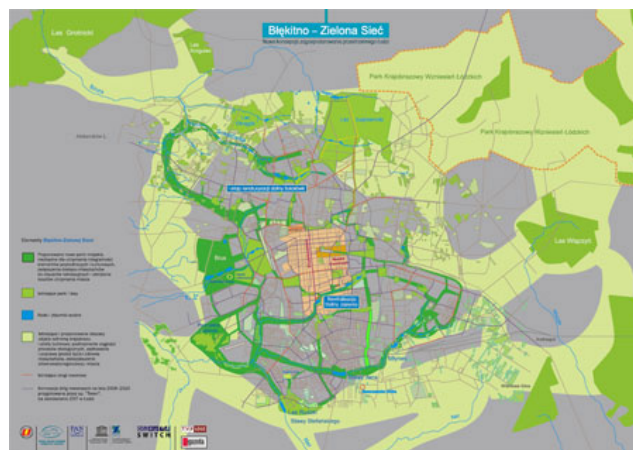
10. Spotlight on SWITCH Cities

Blue-Green Network in Lodz

The BLUE-GREEN NETWORK is a concept of urban space development in Lodz. It uses the advantage of Lodz being located on the watershed divide and its abundance of small streams. The stream network, which in the 19th century served as a basis for the city's rapid growth, today provides an opportunity for its sustainable development and adaptation to climate change.

The network builds upon the existing and, where possible, rehabilitated city rivers system and green areas of the City. It uses stormwater as a basis for their maintenance and – on the other hand – is a basic mechanism for stormwater retention and purification. It provides a basis for spatial organization of the city space, maintains the continuity of ecological processes, and provides the benefits for the environment, society and advantages for economic development.

The formulation of the BLUE-GREEN NETWORK was possible based on ecological biotechnologies for water retention and purification developed within SWITCH at the University of Lodz and in the International Institute of the Polish Academy of Sciences – European Regional Centre for Ecohydrology under the auspices of UNESCO (WP 5.3 co-operation with the WP 2.1 and 2.2).



Blue-Green Network Concept – river valleys and green areas in the City of Lodz as a basis for its spatial planning and sustainable development.

SWITCH Contact Details

The CENTRAL MANAGEMENT UNIT (CMU) is UNESCO-IHE, which is responsible for the day-to-day coordination of the project.

The CMU is located at: UNESCO-IHE, Westvest 7, 2611 AX Delft, Netherlands; t: +31 15 2151771

The CMU consists of: Kala Vairavamoorthy, Scientific Director, k.vairavamoorthy@unesco-ihe.org
Carol Howe, Project Manager, c.howe@unesco-ihe.org

Visit the SWITCH Website: <http://www.switchurbanwater.eu/>

For issues relating to the SWITCH newsletter, contact SWITCH News: switchnews@lboro.ac.uk